

CURVE "C" TABLES

CH. BEING	CHORD	RADIUS	DELTA	ARC	TAN.
1 S 24°56'57"E	169.42'	192.40'	52°14'28"	175.43'	94.34'
2 N 36°07'24"E	471.85'	853.44'	32°05'45"	478.08'	245.49'
3 N 27°25'17"E	681.11'	813.44'	49°30'00"	702.76'	375.00'
4 N 11°22'24"E	258.25'	853.44'	17°24'15"	259.24'	130.63'
5 S 89°39'55"E	61.72'	997.56'	03°32'44"	61.73'	30.87'
6 S 80°01'50"E	272.90'	997.56'	15°43'26"	273.76'	137.75'
7 N 02°17'47"W	112.85'	250.51'	26°01'59"	113.82'	57.91'
8 N 20°21'29"E	83.88'	250.51'	19°16'33"	84.28'	42.54'
9 N 20°41'09"E	75.12'	220.00'	19°39'36"	75.49'	38.12'
10 S 60°12'13"E	124.07'	207.73'	34°45'00"	125.99'	65.00'
11 N 40°11'21"E	172.49'	709.50'	13°57'52"	172.92'	86.89'
12 N 18°56'09"E	349.79'	709.50'	28°32'31"	353.44'	180.47'
13 S 09°01'56"E	336.00'	709.50'	27°23'39"	339.22'	172.92'
14 S 30°56'49"E	204.59'	192.40'	64°14'11"	215.71'	120.78'
15 N 29°53'14"E	586.57'	773.44'	44°34'05"	601.62'	316.96'
16 N 05°08'14"E	86.58'	773.44'	04°55'55"	86.58'	33.31'
17 N 21°05'40"E	157.30'	731.88'	12°20'19"	157.81'	79.11'
18 N 00°54'59"W	257.39'	250.51'	81°49'28"	270.31'	150.00'
19 N 08°41'40"E	177.71'	220.00'	47°38'35"	182.94'	97.13'
20 N 37°09'41"E	246.65'	709.50'	20°01'11"	247.91'	125.23'
21 N 04°49'38"E	539.00'	709.50'	44°38'54"	552.89'	291.34'
22 S 20°19'43"E	114.81'	150.00'	45°00'00"	117.81'	62.13'
23 N 39°43'03"E	315.65'	731.88'	24°54'27"	318.15'	161.63'
24 N 11°02'55"E	262.95'	902.44'	16°45'16"	263.89'	132.90'
25 N 29°11'34"E	306.18'	902.44'	19°32'02"	307.67'	155.34'
26 N 44°18'58"E	168.47'	802.44'	10°42'42"	168.71'	84.60'

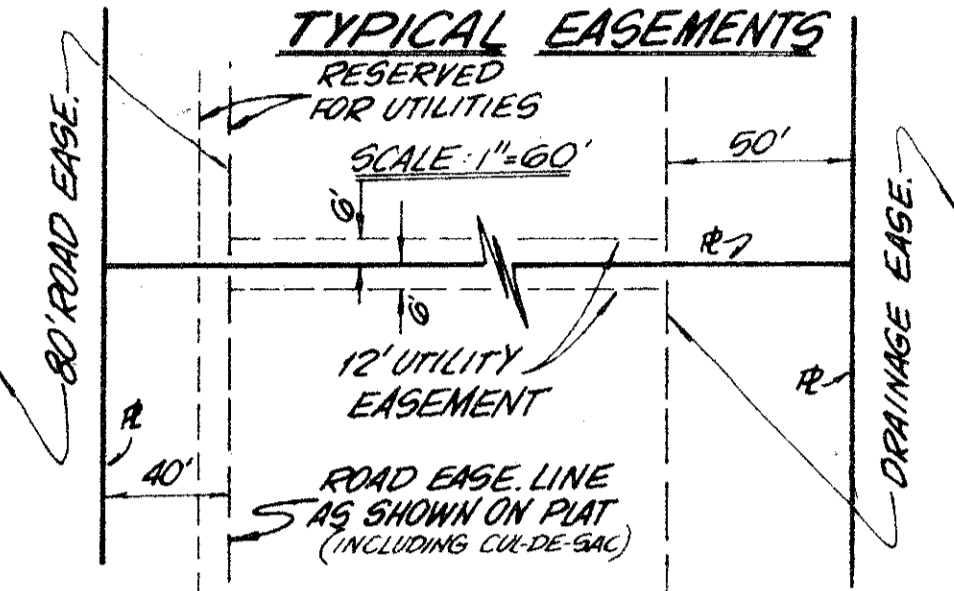
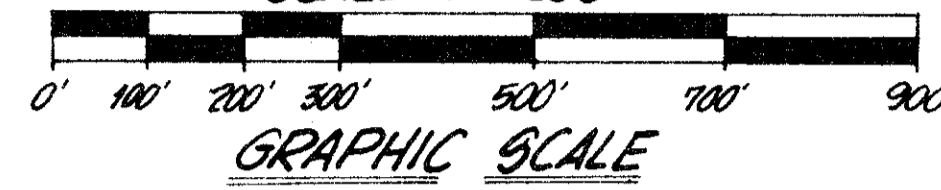
HOMELAND

A SUBDIVISION OF ALL OF SECTION 35, TOWNSHIP 44 SOUTH, RANGE 41 EAST; ALL OF TRACT 38, HIATUS BETWEEN TOWNSHIPS 44 AND 45 SOUTH, RANGE 41 EAST; AND PART OF SECTION 2, TOWNSHIP 45 SOUTH, RANGE 41 EAST PALM BEACH COUNTY, FLORIDA

SHEET 5 OF 7 SHEETS

SCALE: 1"=200'

JUNE 1977



CURVE "C" TABLES (CONTINUED)

27 N 53°55'17"E	344.99'	2327.63'	08°30'00"	345.31'	172.97'
28 S 21°18'13"E	237.89'	365.20'	38°01'00"	242.32'	125.81'
29 S 24°18'44"E	38.38'	709.50'	03°05'58"	38.38'	19.20'
30 S 24°40'17"E	114.81'	150.00'	45°00'00"	117.81'	62.13'
31 S 33°21'41"E	306.85'	220.00'	88°28'05"	339.56'	214.07'
32 N 15°20'37"E	281.72'	500.00'	30°20'41"	284.81'	135.59'
33 S 23°34'15"E	71.96'	250.51'	16°30'57"	72.21'	36.36'
34 N 36°57'30"E	342.11'	651.86'	30°25'33"	346.16'	177.26'
35 N 36°16'52"E	378.85'	691.86'	31°48'49"	383.75'	196.95'
36 N 10°46'10"E	231.71'	822.44'	16°11'48"	232.48'	117.02'
37 N 34°18'10"E	436.86'	822.44'	30°48'14"	442.17'	226.57'
38 N 26°10'17"E	687.80'	882.44'	47°00'00"	707.48'	375.00'
39 N 53°55'17"E	333.14'	2247.63'	08°30'00"	333.44'	167.03'
40 N 53°55'17"E	339.07'	2287.63'	08°30'00"	339.38'	170.00'
41 N 80°40'17"E	203.80'	781.05'	15°00'00"	204.48'	102.83'
42 N 85°40'17"E	203.80'	781.05'	15°00'00"	204.48'	102.83'
43 N 73°10'17"E	425.01'	821.05'	30°00'00"	429.90'	220.00'
44 S 13°49'43"E	293.44'	705.89'	24°00'00"	295.60'	150.00'
45 S 21°39'46"E	103.08'	709.50'	08°19'55"	103.17'	51.68'
46 N 02°10'17"E	212.13'	150.00'	90°00'00"	235.62'	150.00'
47 S 47°21'10"E	221.50'	220.00'	60°27'08"	232.12'	128.18'
48 N 16°39'34"E	239.49'	500.00'	02°42'48"	241.84'	123.34'
49 N 01°29'13"E	22.96'	500.00'	27°37'53"	22.96'	11.48'
50 N 22°48'22"E	187.99'	751.01'	14°22'47"	188.48'	94.74'
51 N 07°53'37"E	201.83'	751.01'	15°26'41"	202.44'	101.84'
52 N 23°39'47"E	78.97'	691.86'	08°32'38"	79.02'	39.55'
53 S 81°48'12"E	333.91'	997.56'	19°16'10"	335.49'	169.35'
54 N 36°09'01"E	449.00'	813.44'	32°02'31"	454.91'	233.57'
55 S 71°01'11"E	40.01'	997.56'	02°17'53"	40.01'	20.01'

1 15

"T" TABLES

1 S 89°49'43"E	200.00'
2 N 29°59'45"E	222.55'
3 N 02°18'43"W	140.00'
4 N 01°10'17"E	80.00'
5 N 01°32'30"W	26.25'
6 N 52°10'17"E	114.44'
7 S 22°08'37"E	78.00'
8 N 15°37'17"E	82.71'
9 N 02°18'43"W	39.39'
10 N 02°18'43"W	243.23'
11 N 88°33'43"E	235.36'
12 S 42°49'43"E	165.00'
13 N 58°22'41"E	287.57'
14 S 47°09'44"E	45.35'
15 N 88°33'43"E	323.45'
16 N 52°10'17"E	138.61'
17 N 02°18'43"W	140.00'
18 N 02°18'43"W	50.84'
19 N 48°40'17"E	125.00'
20 N 00°10'17"E	300.00'
21 N 00°10'17"E	247.70'
22 N 88°33'43"E	72.00'
23 N 02°18'43"W	137.78'
24 N 02°18'43"W	116.20'
25 N 58°10'17"E	149.66'
26 S 85°20'07"E	148.66'
27 N 29°59'45"E	145.00'
28 N 01°31'43"W	48.00'
29 N 02°40'27"W	160.00'
30 N 01°49'43"W	40.00'
31 S 31°49'43"E	40.00'
32 S 40°19'43"E	40.00'

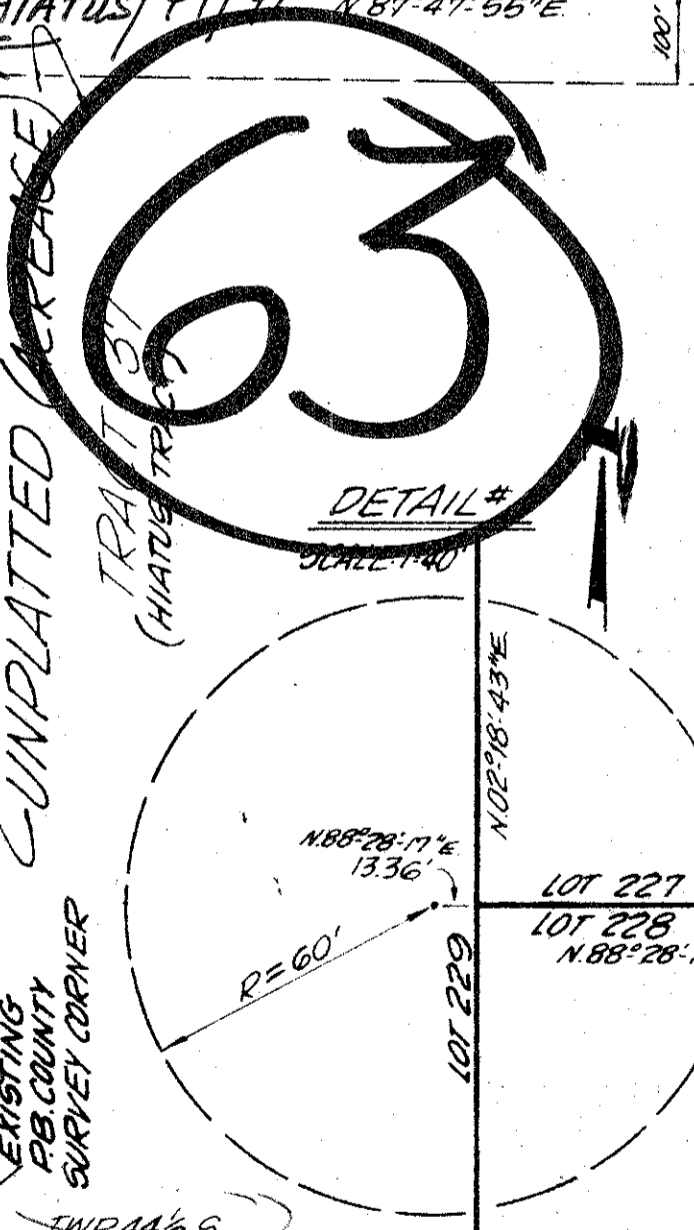


UNPLATTED (ACREAGE)
APPROX. (44.4) (HIATUS)

WEST LINE SEC. 24 (44.4)
N 02°26'26"W
614.68'

GENERAL NOTES

- (SEE NOTE 5. OF SURVEYOR NOTES - PAGE 1 OF 7)
- DENOTES PERMANENT REFERENCE MONUMENTS (PRM'S)
- DENOTES PERMANENT CONTROL POINTS (PCP'S)
- BEARINGS ARE REFERENCED TO AN ASSUMED BEARING OF S. 89° 57' 50" E. ALONG THE NORTH LINE OF SECTION 35, TOWNSHIP 44 S., RANGE 41 E.
- ALL LOT DIMENSIONS ARE TO LOT LINE INTERSECTION AND NOT TO EASEMENT LINE
- BUILDING SETBACK LINES SHALL BE AS REQUIRED BY PALM BEACH COUNTY ZONING REGULATIONS
- THERE SHALL BE NO BUILDINGS OR ANY KIND OF CONSTRUCTION OR TREES OR SHRUBS PLACED ON DRAINAGE EASEMENTS
- ALL LOTS CONTAIN A MINIMUM OF .00 ACRES
- ALL NON CUL DE SAC LOTS CONTAIN A MINIMUM ROAD FRONTAGE OF 300 FEET OR HAVE A 300 FOOT MINIMUM WIDTH AT CONNECTING MIDPOINT OF LONGEST LOT LINES
- FOR EXAMPLE OF UTILITY & DRAINAGE EASEMENTS - SEE DETAIL OF TYPICAL EASEMENTS



HOMELAND

0256-000

Dailey-Fotoy, inc.
land surveyors, planners, engineers